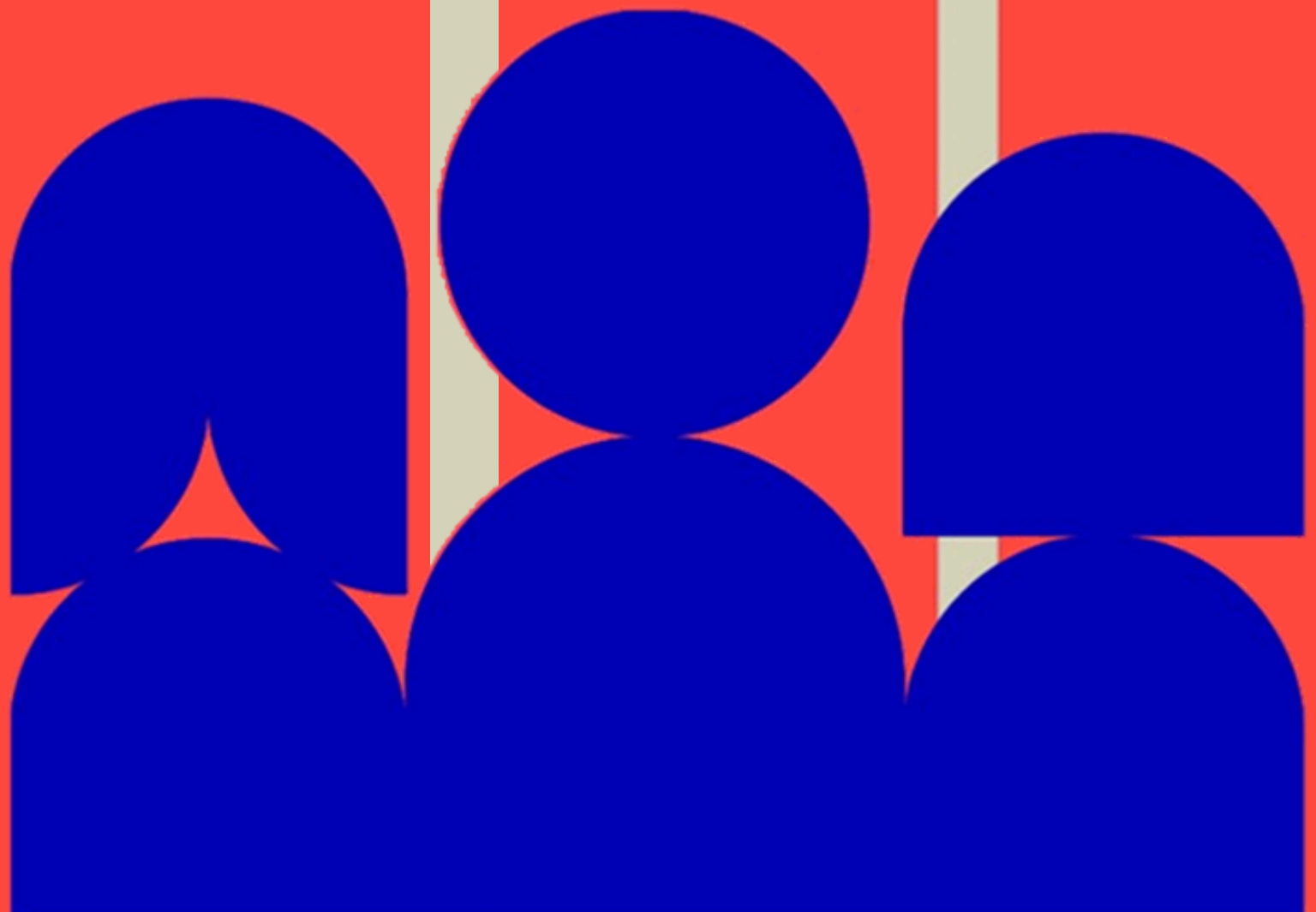


Amber's plain language guide to...

**AI**  
**(Artificial**  
**Intelligence)**



# AI in Assessment

## **The Traffic Light System**

All assessments should be listed as being type A,B, or C.

This should be explicitly written in your assessment brief.

# AI in Assessment

## The Traffic Light System

**A:** Not permitted

**B:** Permitted as  
an assistive tool

**C:** Has an  
integral role



# AI in Assessment

## The Traffic Light System

### **A:** Not permitted

You cannot use AI in any way, shape, or form.

This includes, for example, using ChatGPT to give you ideas to start an essay.

Our plagiarism checkers don't check for AI, but you may still be challenged by your marker.



# AI in Assessment

## The Traffic Light System

### **B:** Assistive Tool

You can use AI as an assistive tool, in ways that are specifically defined in your assessment brief.

You don't have to use AI, but if you do, remember to reference it. Guides can be found on the University Library website.



# AI in Assessment

## The Traffic Light System

### **C:** Integral role

AI must be used in your assessment, and this will be detailed in the assessment brief.

Remember to reference your AI – guides can be found on the University Library website



# AI in Assessment

## What kind of referencing?

### In type B & C

If you used GenAI, acknowledge it once with a general statement – this will be given to you in your assignment brief, and is also available online.

If you quoted or paraphrased GenAI output, then use an in-text citation.



# AI in Assessment

## **What if I use it when I'm not meant to ?**

If you use AI when you are not meant to, this counts as academic misconduct.

You will have agreed to the Academic Integrity Statement when you submitted your coursework / taken your exam (via Inspera or on paper). Using AI when you're not meant to violates this.



# AI in Assessment

## **Examples of misconduct**

This is not exhaustive, but may include:

<b>Plagiarism</b>	Using AI without citation – including paraphrasing
<b>Collusion</b>	Using information or answers from AI, with a type A assessment or without referencing

# AI in Assessment

## Examples of misconduct

**Contract Cheating  
(including  
impersonation)**

Presenting AI generated work as something you made - through purchase or any other means.

**Breaching of  
examination  
regulations.**

Going against the University's Academic Integrity Statement. This includes you acknowledging when you can and cannot use GenAI.

# AI in Assessment

## **How do they detect AI ?**

There are no tools that can reliably and accurately detect GenAI material, and are prone to bias against certain groups.

Staff have a guide and relevant training for what they should do if they suspect academic misconduct with AI.

# AI in Assessment

## **What happens if I am accused of using AI?**

If you are accused of academic misconduct, you will be told, and an investigation will be launched.

This is where you can provide evidence to prove the work is your own.

Although the official term is “investigation” you can think of this as more of a discussion.

# AI in Assessment

## What evidence can I give?

The evidence you can give will be dependent on the kind of misconduct suspected, but it may include something like

- showing a working reference list
- document editing history
- a viva where you get to talk about your process and findings