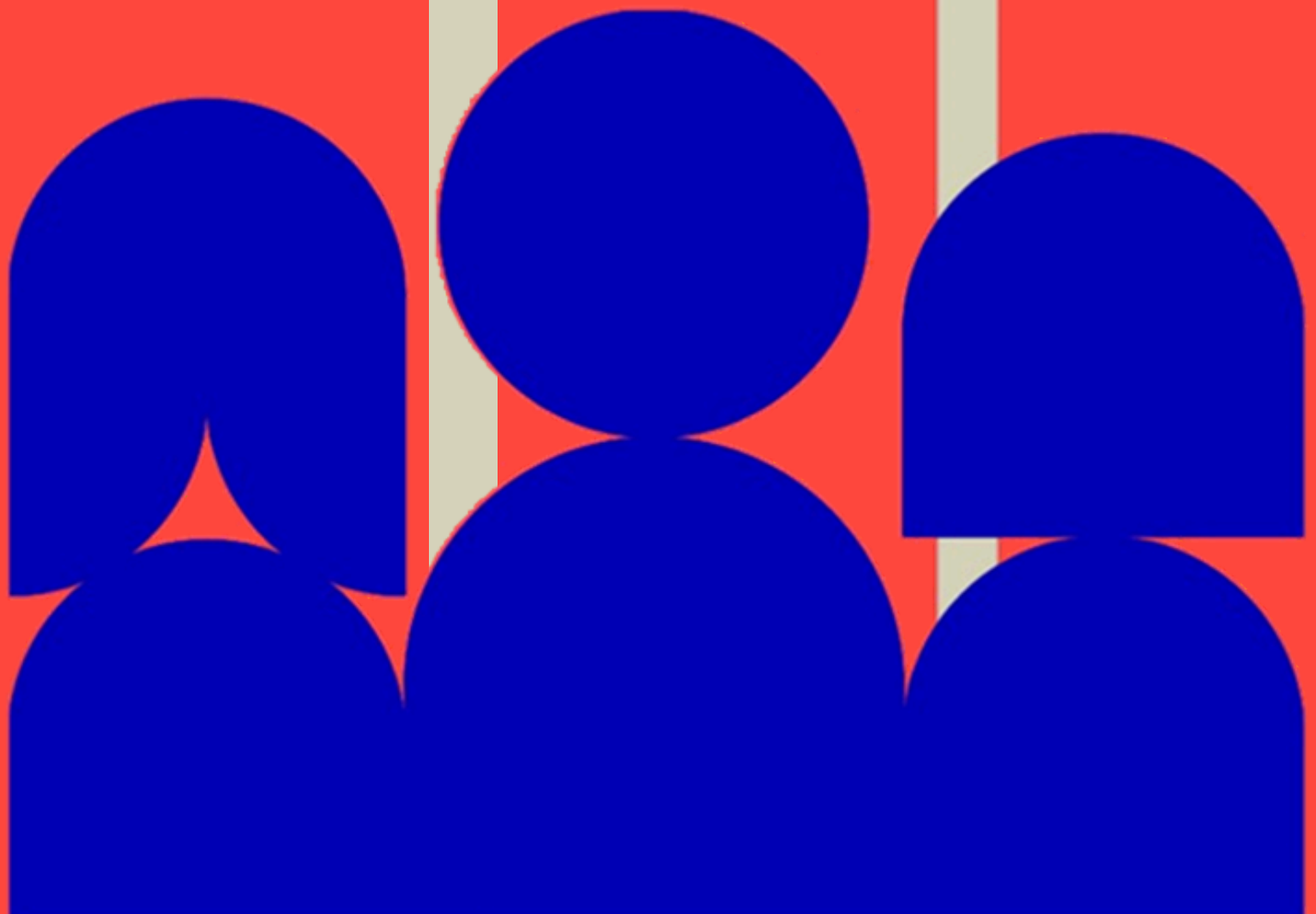


Amber's plain language guide to...

Appeals



Appeals

What are they?

Appeals are against **final** *academic decisions* due to *specific circumstances*.

Appeals

What are 'academic decisions'?

Progression

e.g., requesting to resit or resubmit an assessment, retake a unit/semester/year, or withdraw

Marks that have an effect on your overall classification

Your final **classification**

Appeals

What are 'circumstances'?

Late IMCs

Procedural irregularities e.g., adding up marks wrong, incorrect marks put in, or total marks being wrong.

Predjuice, bias, or inadequate assessment by one or more examiners

A difference in academic approach, or non-apparent theories/concepts *for*

PGR only

Appeals

What is the process?

You apply for an appeal (stage 1), and this is reviewed by your Board of Studies.

If you want to review the decision following the result of your appeal, you then go onto stage 2.